

SEABEE TEAM 1110

Long Xuyen, An Giang Province, RVN



Figure 1 Seabee Team 1110

Seabee Team 1110 was deployed to the village of Long Xuyen, An Giang Province, RVN in 1968. In that village there was a steel framed roof structure/building that had been brought in by the French during their time in RVN but was never erected. The components had been moved through 20 locations prior to ending up in Long Xuyen. One of the team's assignments was to erect the structure which was to become a covered Province Maintenance Facility.

There was only one 8 x 11 drawing labeled in French which we had to work from so we kind of had one hand tied behind our back to start with. It was like a full-size jigsaw puzzle.

The structure consisted of 12 prefabricated columns which needed a foundation so that became the first order of business. Because I was the EA on the team it fell in my direction to layout the foundation footings and get the roof trusses sorted out (The trusses were made up of angle iron components that were connected via gusset plates) There were hundreds of pieces but after much head scratching, we were able to determine the fit-up of each truss and begin assembly/erection.



Figure 2 EA2 Womack Grading the Site

The first order of business was to grade the site to provide a level for which the building to be erected and to layout the footing locations.



Figure 3 BU2 Karlson placing concrete footing

The foundations consisted of poured concrete bases with anchor bolts set to accommodate the base plate for each of the twelve columns.

The columns, which were prefabricated, were set in a vertical position atop the concrete foundations using the blade of our D6 dozer as a hoist. So far, so good but then it became apparent we would need a crane of some sort to assemble and erect the truss components to the vertical columns. Using the

Seabee "Can Do" ingenuity, we fabricated an "A" frame stiff leg boom on the front of our $\frac{3}{4}$ ton weapons carrier and with the addition of armored plating in the rear end for counterweight, we had a rolling mobile crane for the erection operation.

With the correct equipment the erection process moved forward with little or no hitches. The roof trusses were completed, purlins installed and the roof sheeting put in place.



Figure 4- Mobile Crane erecting truss components



Figure 5-HM2 Miller and CE2 Franks working concrete floor slab

Once the roof structure was completed the floor slab which consisted of concrete was put in place using multiple concrete pours with the 6S mixer.

At last, after 20 years, the Province Maintenance Facility was ready for use. And surprisingly enough all the components were there, not one missing piece after 20 years of shuffling around RVN.



Figure 6 Finished Building July 1968

Another job well done by the SEABEES

On a side note, when COMCBPACT came in for an inspection, our team was written up for defacing government property. (The stiff leg on the ¾ ton weapons carrier was not keeping with the purpose of the vehicle)

Submitted by;

William (Bill) Womack EA2 Seabee Team 1110

1966 – 1970

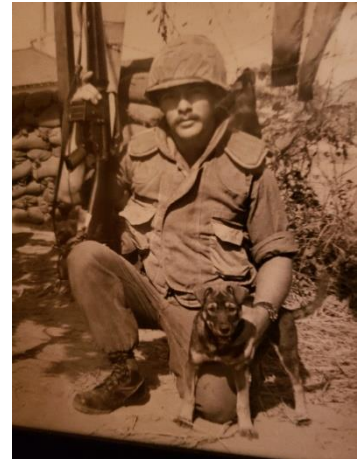


Figure 7- EA2 Womack ready for convey duty with "Sam"